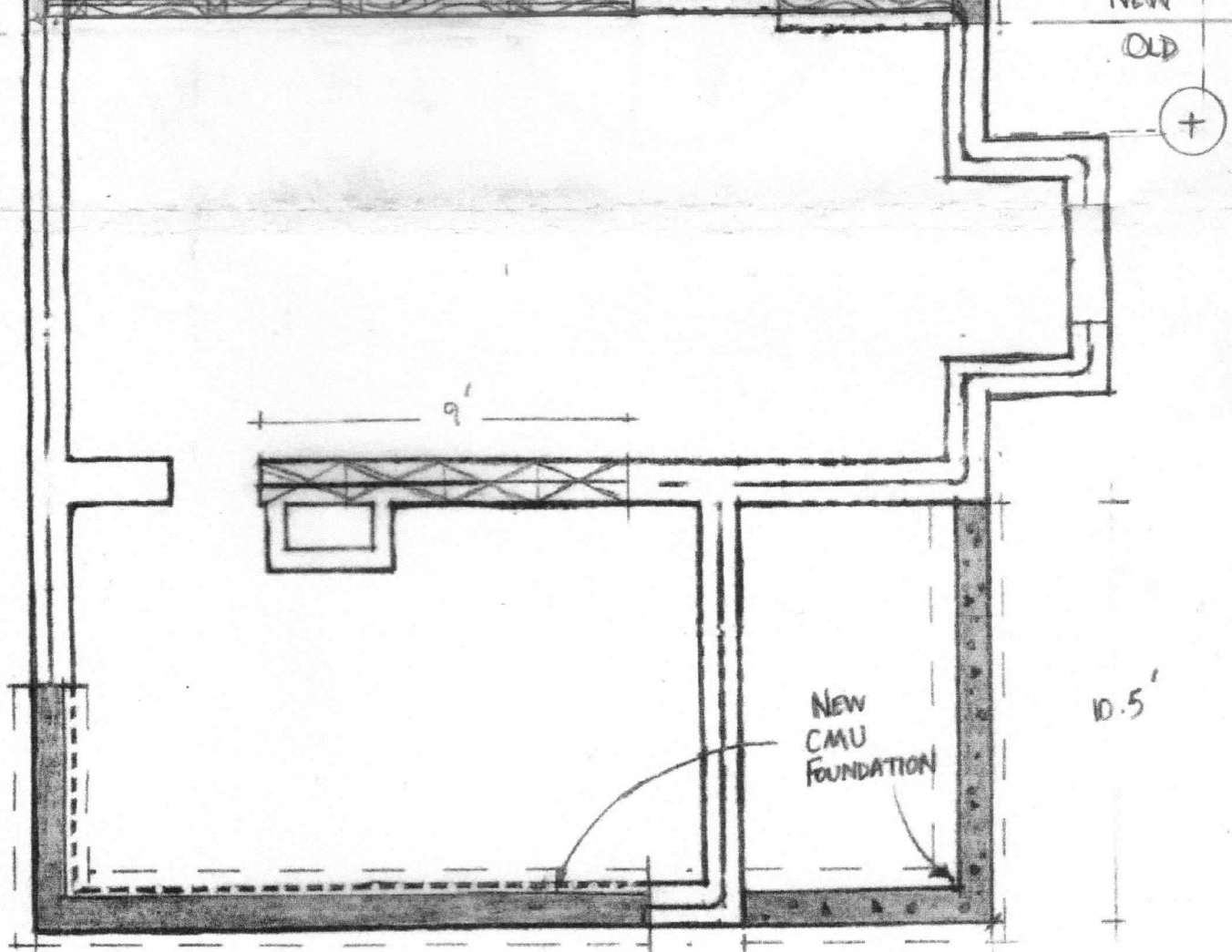


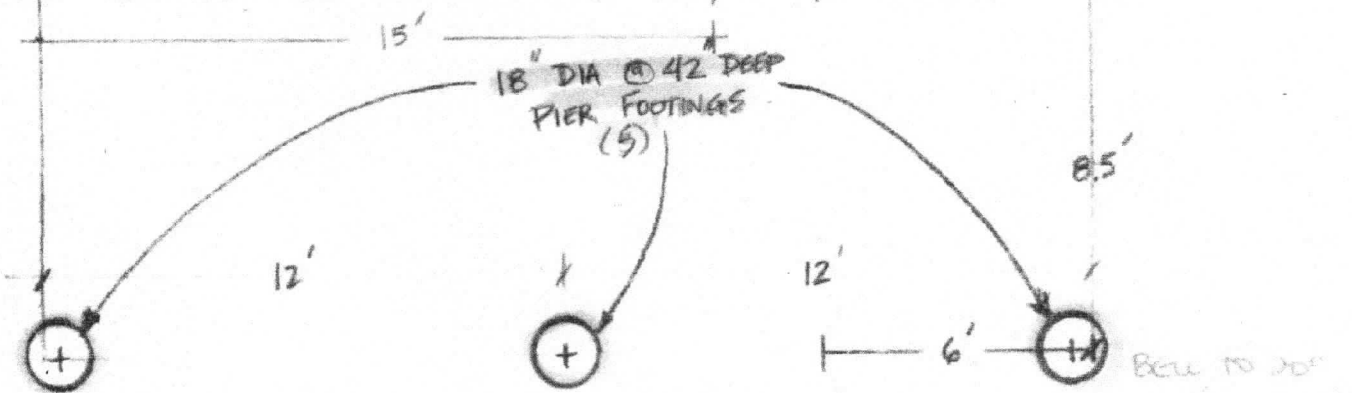
NEW
OLD

NEW
OLD



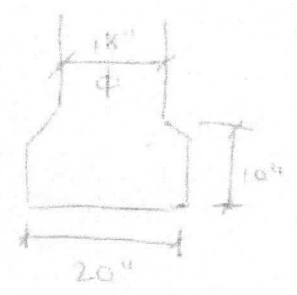
6'

10.5'

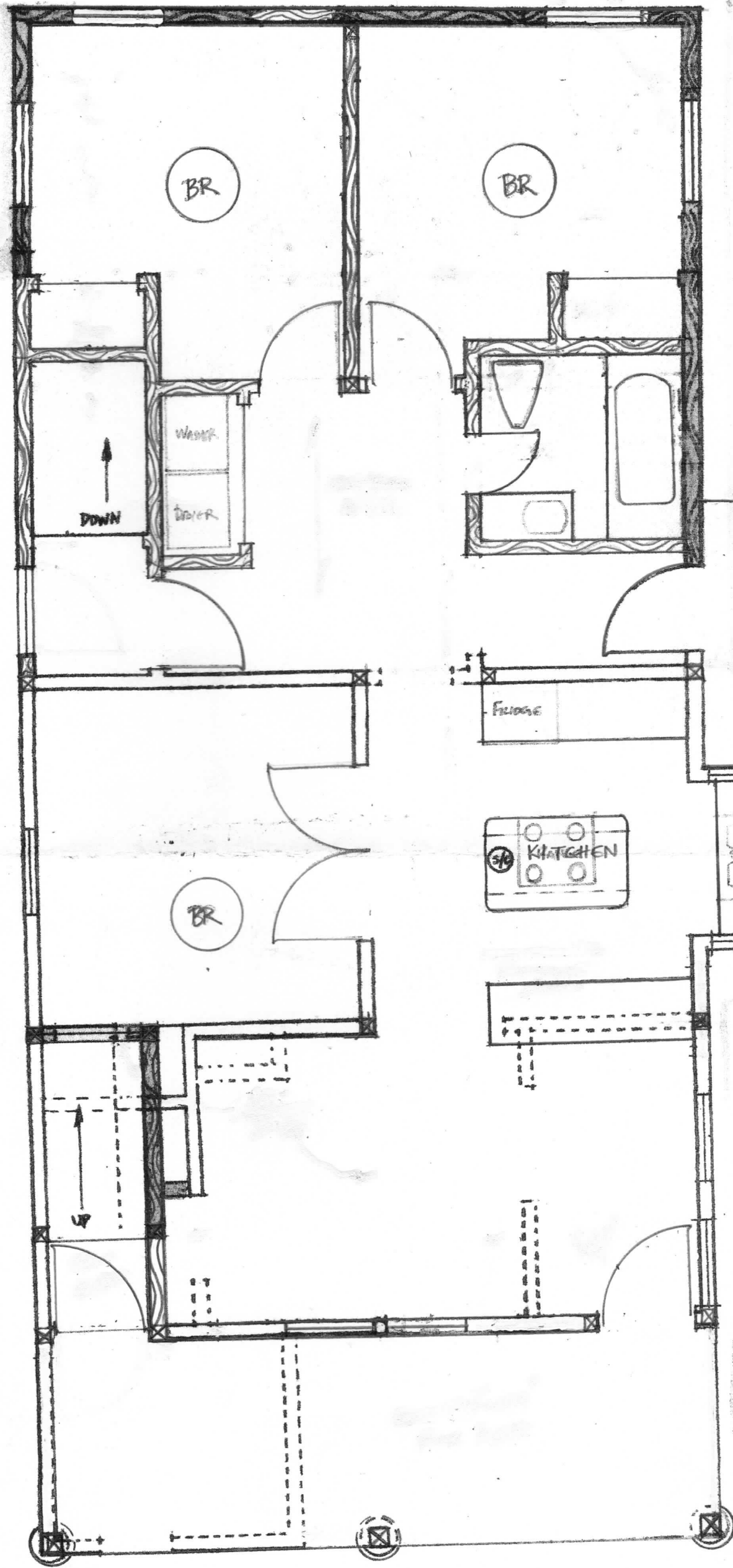


18" DIA @ 42" DEEP
PIER FOOTINGS
(5)

Bell to 20"



Walls closer than five feet from adjacent property line shall have minimum 1 hour fire-resistance rating with exposure from both sides. R302.1

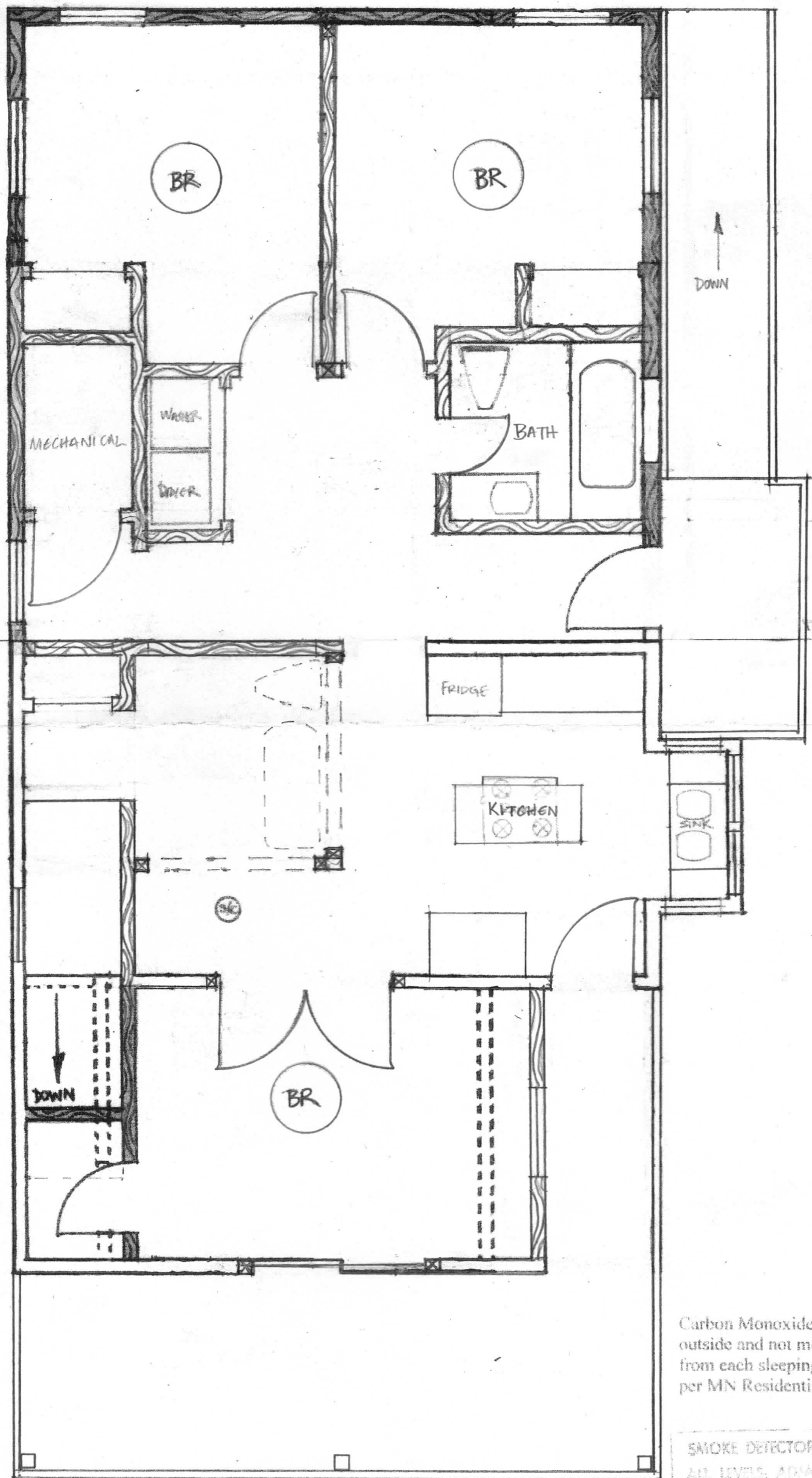


Provide 15" clearance from center of water closet to any obstruction. Minimum 24" front clearance req'd (Typical)

F = Mechanical ventilation required, R303.3 (typical)

Enclosed accessible space under stairs requires minimum 1/2" gypsum board R302.7

Safety glazing required R308.4 See Sections R308.4.1 through 308.4.7 for specific hazardous locations.



NEW
OLD

NEW
OLD

Carbon Monoxide Alarms required outside and not more than 10 feet from each sleeping area or bedroom per MN Residential Code R315

SMOKE DETECTORS REQUIRED ON ALL LEVELS, ADJACENT TO A10 IN ALL SLEEPING ROOMS (NEW CONSTRUCTION REQUIRES HARDWIRED & INTERCONNECTED DETECTORS)

